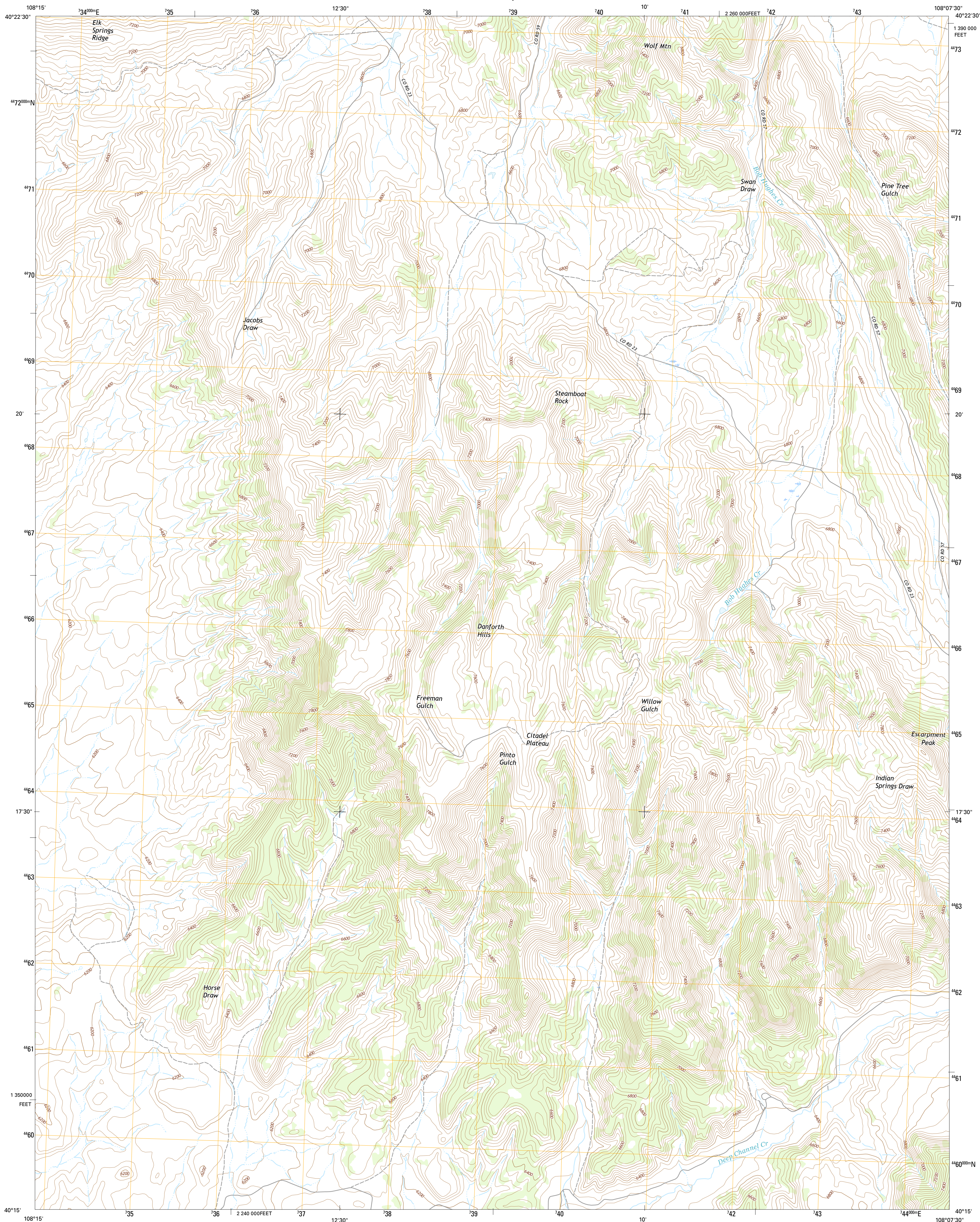




U.S. DEPARTMENT OF THE INTERIOR
U.S. GEOLOGICAL SURVEY



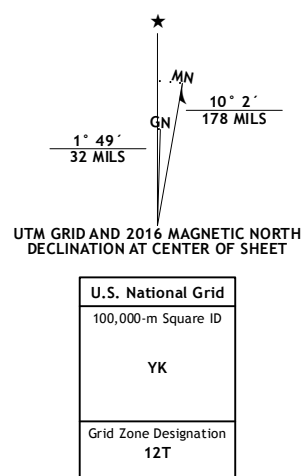
CITADEL PLATEAU QUADRANGLE
COLORADO-MOFFAT CO.
7.5-MINUTE SERIES



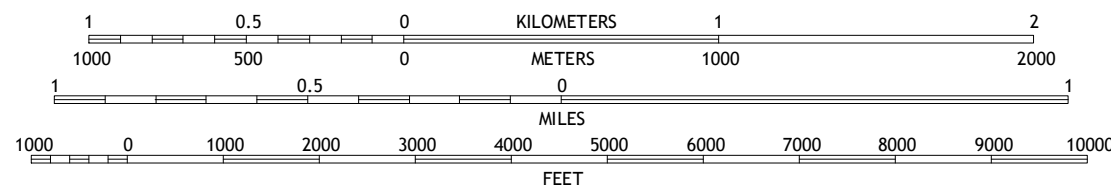
Produced by the United States Geological Survey
North American Datum of 1983 (NAD83)
World Geodetic System of 1984 (WGS84). Projection and
1 000-meter grid: Universal Transverse Mercator, Zone 12T
10 000-foot ticks: Colorado Coordinate System of 1983 (north
zone)

This map is not a legal document. Boundaries may be generalized for this map scale. Private lands within government reservations may not be shown. Obtain permission before entering private lands.

Imagery.....	NAIP,	August	2013
Roads.....	U.S. Census Bureau,	2015	- 2016
Names.....	GNIS,		2016
Hydrography.....	National Hydrography Dataset,		2013
Contours.....	National Elevation Dataset,		2004
Boundaries.....	Multiple sources; see metadata file	1972	- 2016
Public Land Survey System.....	BLM,		2011
Wetlands.....	FWS National Wetlands Inventory	1977	- 2014

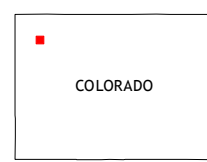


SCALE 1:24 000



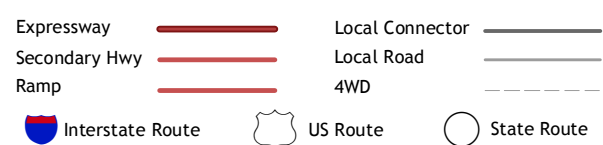
CONTOUR INTERVAL 40 FEET
NORTH AMERICAN VERTICAL DATUM OF 1988

This map was produced to conform with the
National Geospatial Program US Topo Product Standard, 2011.
Data file associated with this product is draft version 0.6.19



QUADRANGLE LOCATION

ROAD CLASSIFICATION



1	2	3	1 Cross Mountain Canyon
4		5	2 Cedar Knob
6	7	8	3 Juniper Mountain

4 Wapiti Peak
5 Price Creek
6 Smizer Gulch
7 Indian Valley
8 White Rock

ADJOINING QUADRANGLES

CITADEL PLATEAU, CO
2016

