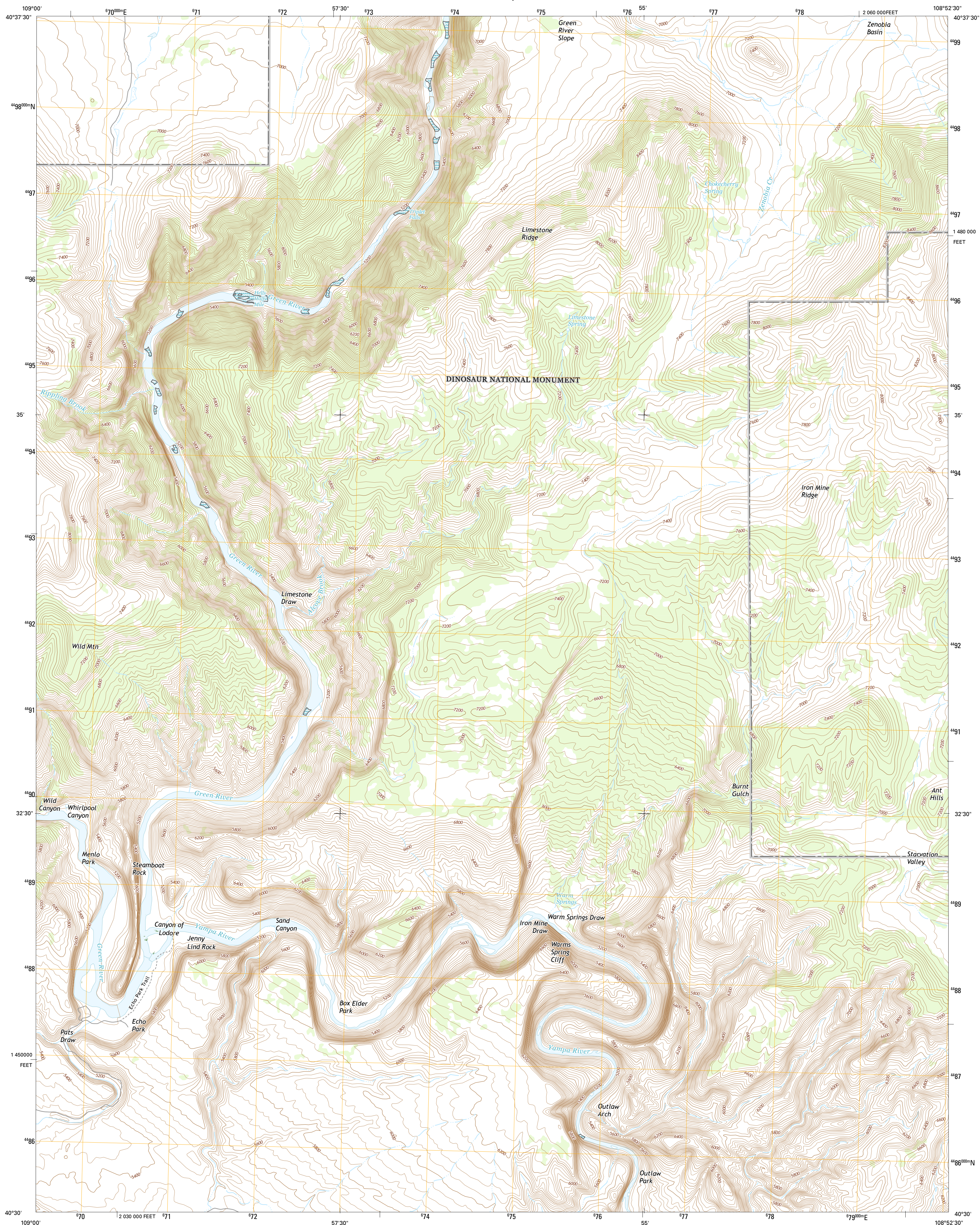




U.S. DEPARTMENT OF THE INTERIOR
U.S. GEOLOGICAL SURVEY



CANYON OF LODORE SOUTH QUADRANGLE
COLORADO-MOFFAT CO.
7.5-MINUTE SERIES

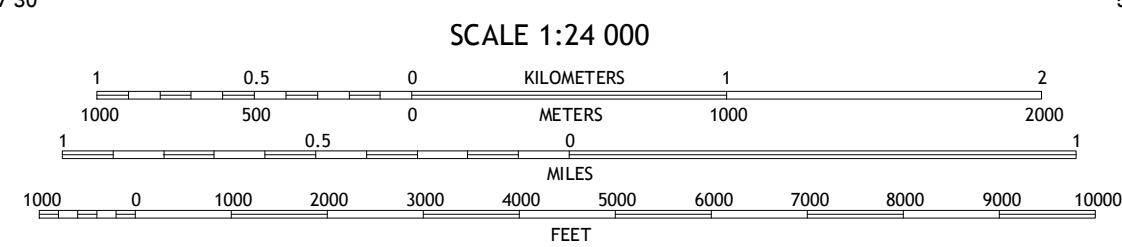
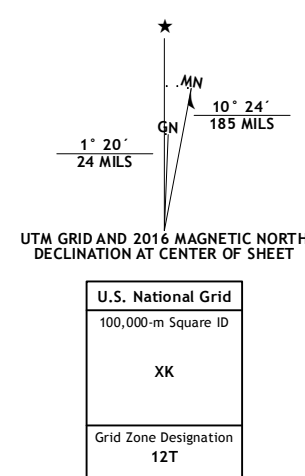


Produced by the United States Geological Survey

North American Datum of 1983 (NAD83)
Geocentric Datum of 1984 (GDA84) Projection and
1 000-metre grid. Universal Transverse Meridian, Zone 12T
10 000-foot ticks. Colorado Coordinate System of 1983 (north zone)

This map is not a legal document. Boundaries may be
generalized for this map scale. Private lands within government
reservations may not be shown. Obtain permission before
entering private lands.

Imagery.....NAIP, July 2000
Coordinates.....U.S. Census Bureau, 2015
Names.....GNIS, 2015
Hydrography.....National Hydrography Dataset,
2015
Contours.....National Elevation Dataset,
2015
Roads.....Multiple sources; see metadata file 1972
Public Land Survey System.....BLM, 2015
Wetlands.....FWS National Wetlands Inventory 1977



CONTOUR INTERVAL 40 FEET
NORTH AMERICAN VERTICAL DATUM OF 1988



This map was produced to conform with the
National Geospatial Program US Topo Product Standard, 2011.
A metadata file associated with this product is draft version 0.6.19




1	2	3	1 Hoy Mountain
4		5	2 Canyon of Lodore North
6	7	8	3 Jack Springs

ADJOINING QUADRANGLES

- 4 Jones Hole
- 5 Zenobia Peak
- 6 Stuntz Reservoir
- 7 Hells Canyon
- 8 Tanks Peak

ROAD CLASSIFICATION

Expressway		Local Connector	
Secondary Hwy		Local Road	
Ramp		4WD	

 Interstate Route  US Route  State Route

CANYON OF LODORE SOUTH, CO
2016

