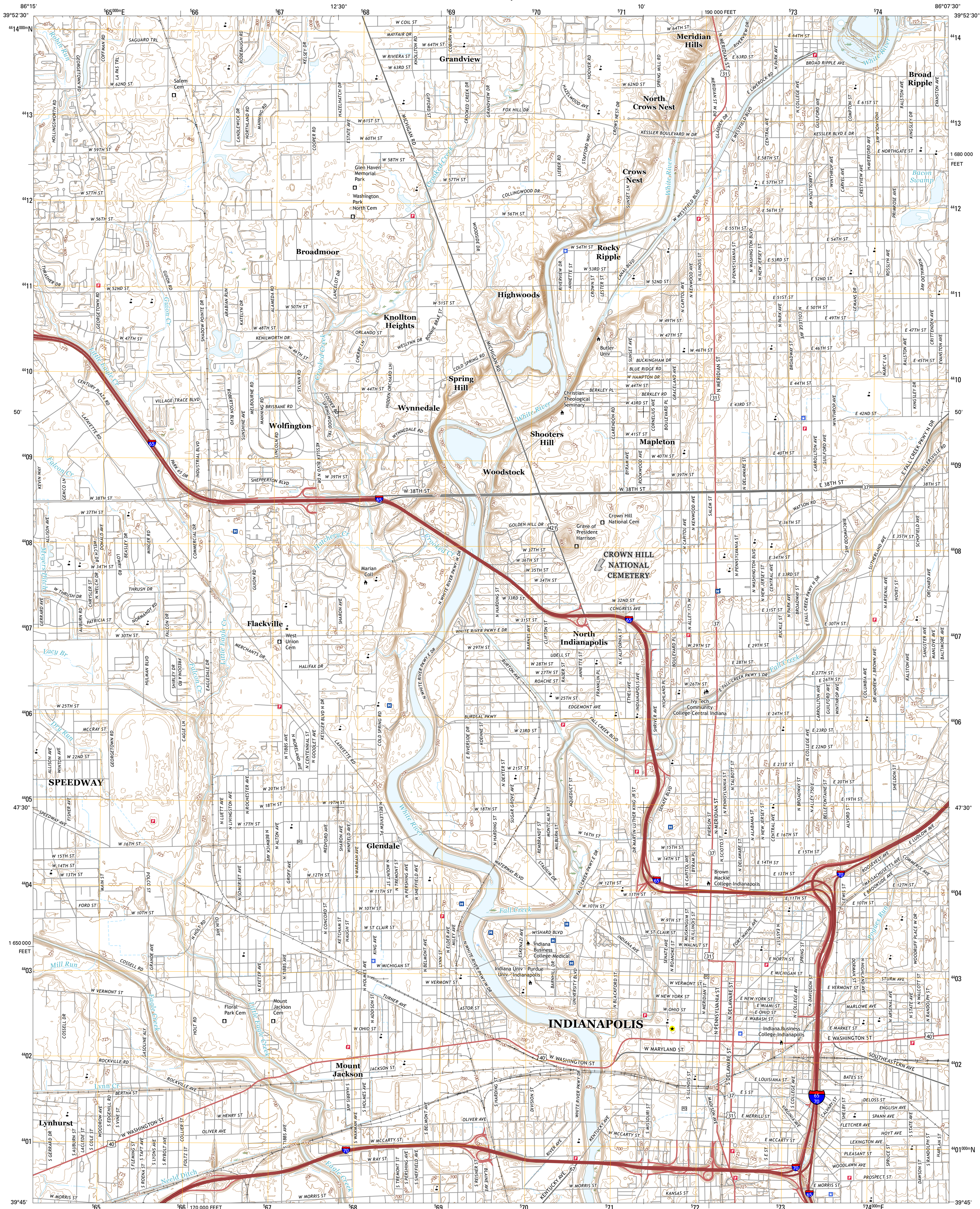




U.S. DEPARTMENT OF THE INTERIOR
U.S. GEOLOGICAL SURVEY



INDIANAPOLIS WEST QUADRANGLE
INDIANA-MARION CO.
7.5-MINUTE SERIES



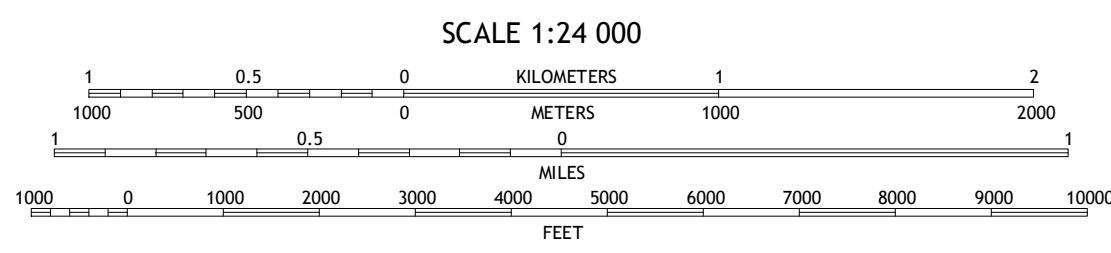
Produced by the United States Geological Survey
North American Datum of 1983 (NAD83)
World Geodetic System of 1984 (WGS84). Projection and
1 000-meter grid: Universal Transverse Mercator, Zone 16S
10 000-foot ticks: Indiana Coordinate System of 1983 (east zone)

This map is not a legal document. Boundaries may be
generalized for this map scale. Private lands within government
reservations may not be shown. Obtain permission before
entering private lands.

Imagery.....NAP, December 2014
Roads.....U.S. Census Bureau, 2015-2016
Names.....GNIS, 2016
Hydrography.....National Hydrography Dataset, 2014
Contours.....National Elevation Dataset, 2016
Boundaries.....Multiple sources; see metadata file 1972-2016
Public Land Survey System.....BLM, 2015
Wetlands.....FWS National Wetlands Inventory 1977-2014

UTM GRID AND 2016 MAGNETIC NORTH
DECLINATION AT CENTER OF SHEET

U.S. National Grid
100,000-m Square ID
EK
Grid Zone Designation
16S



CONTOUR INTERVAL 5 FEET
NORTH AMERICAN VERTICAL DATUM OF 1988

This map was produced to conform with the
National Geospatial Program US Topo Product Standard, 2011.
A metadata file associated with this product is draft version 0.6.19



ROAD CLASSIFICATION

Expressway
Secondary Hwy
Ramp

Local Connector
Local Road
4WD
US Route
State Route

1	2	3
4	5	6
7	8	9

ADJOINING QUADRANGLES

1 Zionsville
2 Carmel
3 Fishers
4 Clermont
5 Indianapolis East
6 Bridgeport
7 Maywood
8 Beech Grove

INDIANAPOLIS WEST, IN
2016

