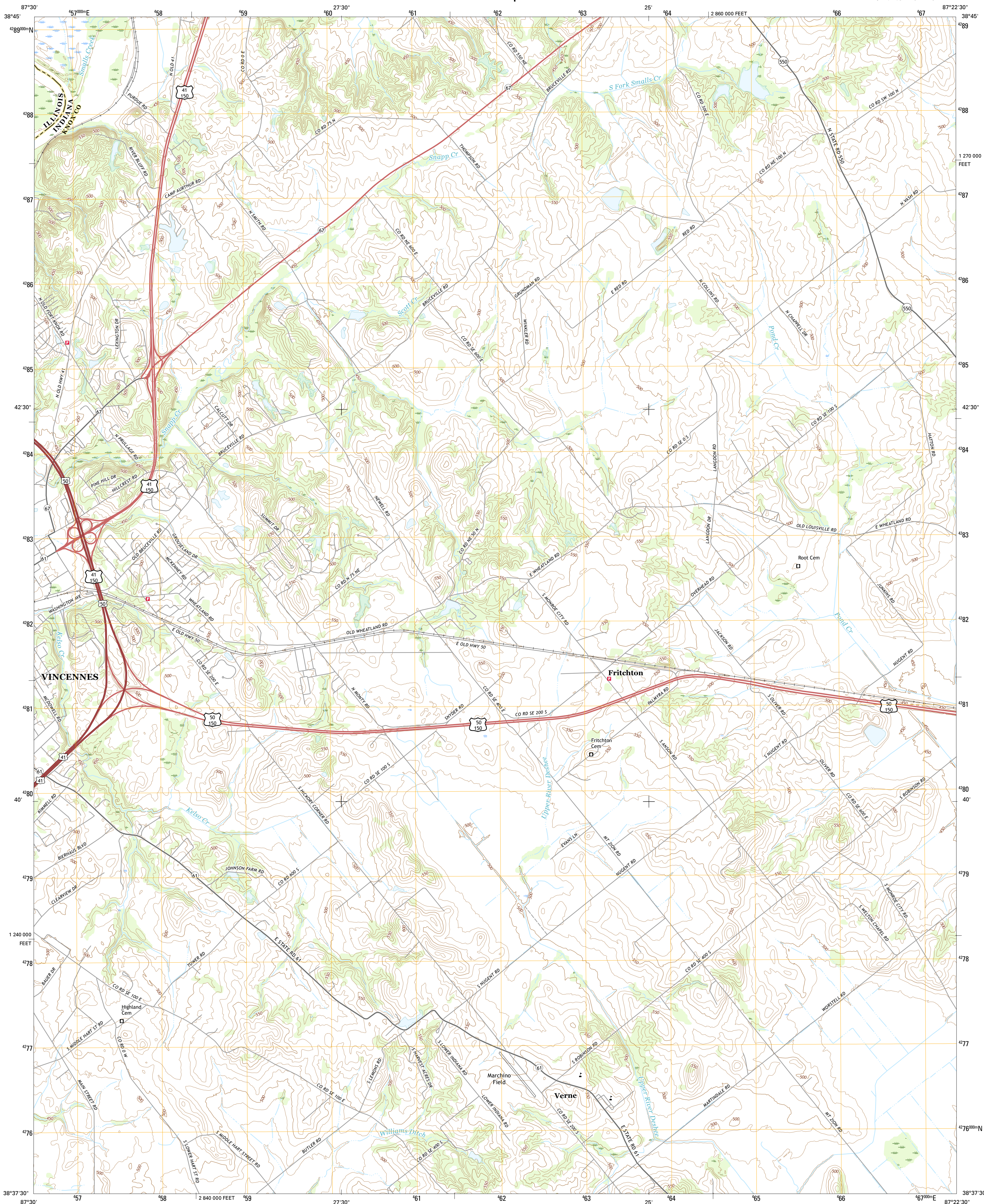




U.S. DEPARTMENT OF THE INTERIOR  
U.S. GEOLOGICAL SURVEY



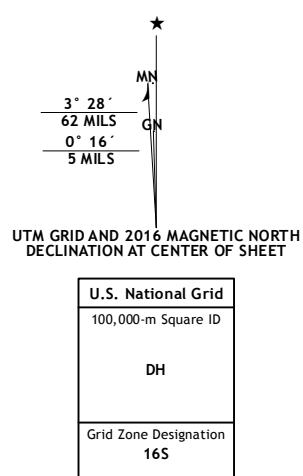
**FRITCHTON QUADRANGLE**  
INDIANA-ILLINOIS  
7.5-MINUTE SERIES



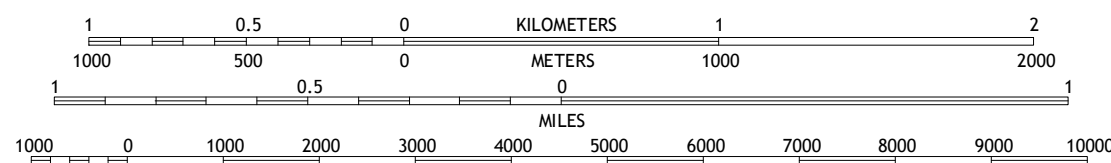
Produced by the United States Geological Survey  
North American Datum of 1983 (NAD83)  
World Geodetic System of 1984 (WGS84). Projection and  
1 000-meter grid: Universal Transverse Mercator, Zone 16S  
10 000-foot ticks: Indiana Coordinate System of 1983 (west  
zone), Illinois Coordinate System of 1983 (east zone)

This map is not a legal document. Boundaries may be generalized for this map scale. Private lands within government reservations may not be shown. Obtain permission before entering private lands.

Images: .....NAIP, October  
Roads: .....U.S. Census Bureau, 2015  
Names: .....GNIS  
Hydrography: .....National Hydrography Dataset  
Contours: .....National Elevation Dataset  
Boundaries: .....Multiple sources; see metadata file 1972  
Public Land Survey System: .....BLM  
Wetlands: .....FWS National Wetlands Inventory 1971 - 20



SCALE 1:24 000








CONTOUR INTERVAL 10 FEET  
NORTH AMERICAN VERTICAL DATUM OF 1988

This map was produced to conform with the  
National Geospatial Program US Topo Product Standard  
A file associated with this product is draft version



**ROAD CLASSIFICATION**

Expressway		Local Connector	
Secondary Hwy		Local Road	
Ramp		4WD	

 Interstate Route     US Route     State Route

1	2	3	1 Russellville
4		5	2 Oaktown
6	7	8	3 Bicknell
			4 Vincennes
			5 Wheatland
			6 Decker
			7 Iona
			8 Monroe City

- 1 Russellville
- 2 Oaktown
- 3 Bicknell
- 4 Vincennes
- 5 Wheatland
- 6 Decker
- 7 Iona
- 8 Monroe City

FRITCHTON, IN-IL  
2016