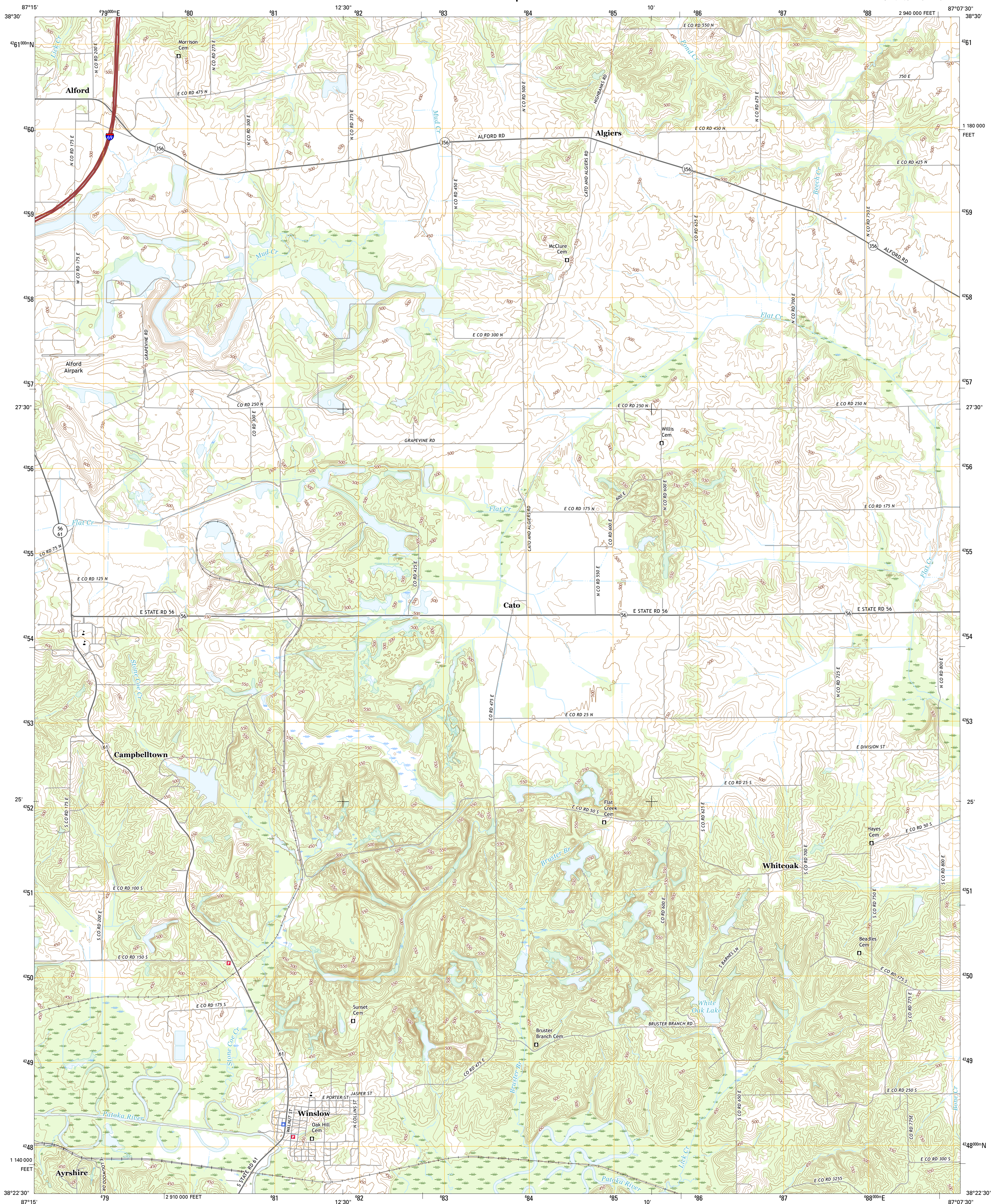




U.S. DEPARTMENT OF THE INTERIOR
U.S. GEOLOGICAL SURVEY



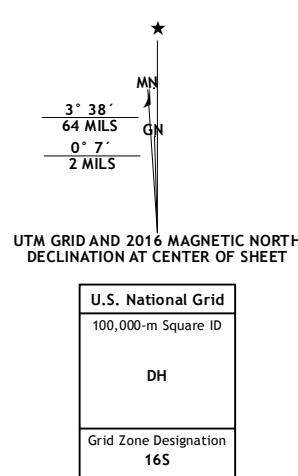
WINSLOW QUADRANGLE
INDIANA-PIKE CO.
7.5-MINUTE SERIES



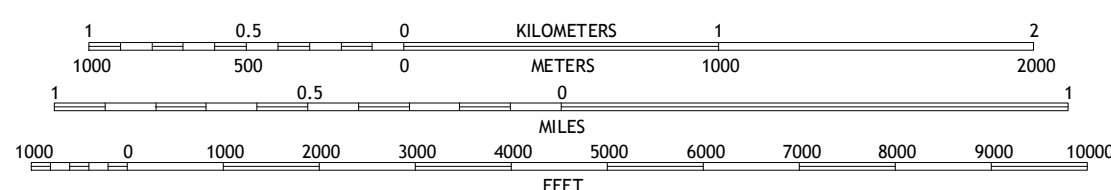
Produced by the United States Geological Survey
North American Datum of 1983 (NAD83)
World Geodetic System of 1984 (WGS84). Projection and
1 000-meter grid: Universal Transverse Mercator, Zone 16S
10 000-foot ticks: Indiana Coordinate System of 1983 (west
zone)

This map is not a legal document. Boundaries may be generalized for this map scale. Private lands within government reservations may not be shown. Obtain permission before entering private lands.

Imagery.....NAIP, December 2010
 Roads.....U.S. Census Bureau, 2015
 Names.....USGS, 2010
 Hydrography.....National Hydrography Dataset, 2010
 Contours.....National Elevation Dataset, 2010
 Boundaries.....Multiple sources; see metadata file 1972
 Public Land Survey System.....BLM, 2010
 Wetlands.....FWS National Wetlands Inventory 1972 - 2010



SCALE 1:24 000

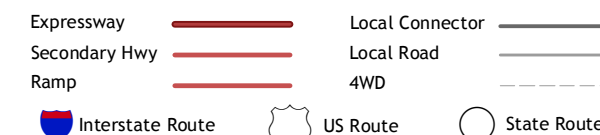


CONTOUR INTERVAL 10 FEET
NORTH AMERICAN VERTICAL DATUM OF 1988

This map was produced to conform with the
National Geospatial Program US Topo Product Standard, 2011.
A metadata file associated with this product is draft version 0.6.19



ROAD CLASSIFICATION



1	2	3
4		5
6	7	8

ADJOINING QUADRANGLES

- 1 Monroe City
- 2 Sandy Hook
- 3 Glendale
- 4 Petersburg
- 5 Otwell
- 6 Oakland City
- 7 Augusta
- 8 Velpen

- 1 Monroe City
- 2 Sandy Hook
- 3 Glendale
- 4 Petersburg
- 5 Otwell
- 6 Oakland City
- 7 Augusta
- 8 Velpen

WINSLOW, IN
2016