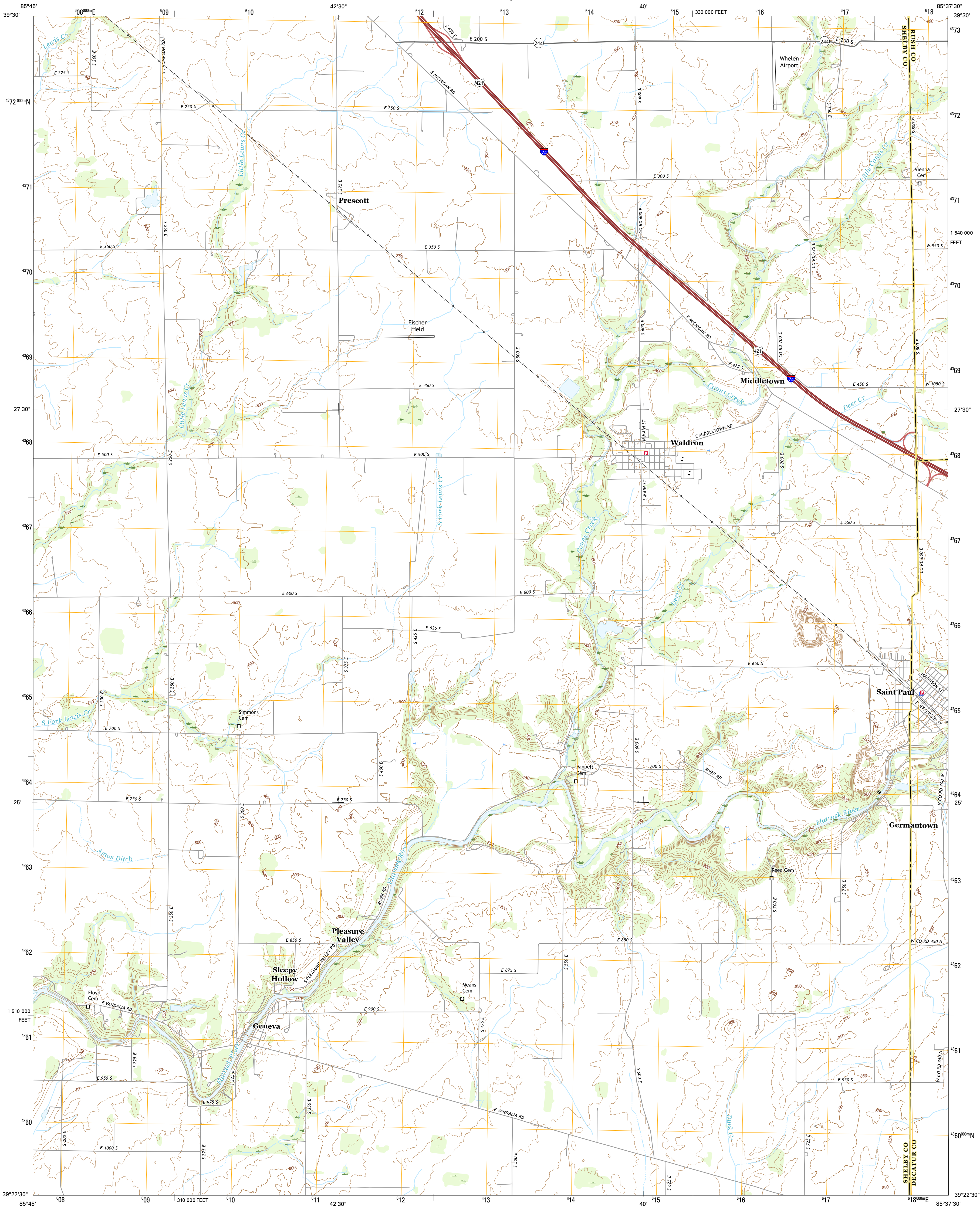




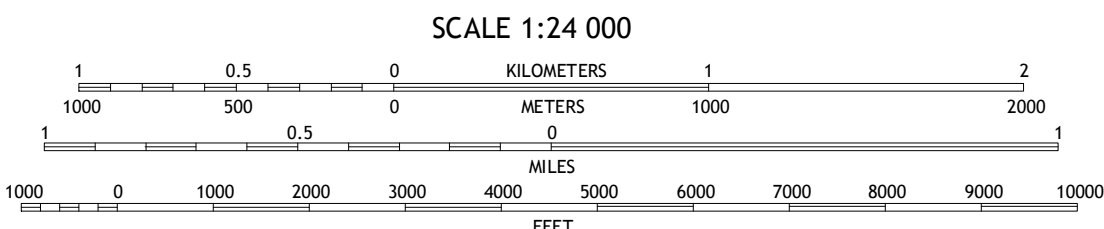
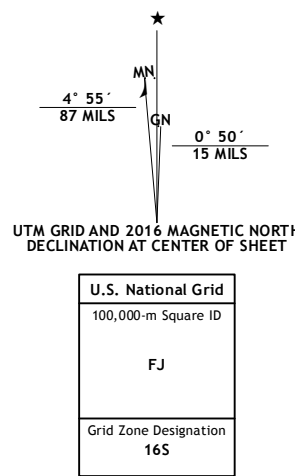
U.S. DEPARTMENT OF THE INTERIOR
U.S. GEOLOGICAL SURVEY



WALDRON QUADRANGLE
INDIANA
7.5-MINUTE SERIES



Produced by the United States Geological Survey
North American Datum of 1983 (NAD83)
World Geodetic System of 1984 (WGS84)
1 000-meter grid; Universal Transverse Mercator, Zone 16S
10 000-foot ticks; Indiana Coordinate System of 1983 (east zone)
This map is not a legal document. Boundaries may be generalized for this map scale. Private lands within government reservations may not be shown. Obtain permission before entering private lands.
Imagery.....NAIP, August 2014
Roads.....U.S. Census Bureau, 2015 - 2016
Names.....GNIS, 2016
Hydrography.....National Hydrography Dataset, 2014
Contours.....National Elevation Dataset, 2016
Boundaries.....Multiple sources; see metadata file 1972 - 2016
Public Land Survey System.....BLM, 2015
Wetlands.....FWS National Wetlands Inventory 1977 - 2014



CONTOUR INTERVAL 10 FEET
NORTH AMERICAN VERTICAL DATUM OF 1988
This map was produced to conform with the National Geospatial Program US Topo Product Standard, 2011.
A metadata file associated with this product is draft version 0.6.19



| ROAD CLASSIFICATION | |
|---------------------|-----------------|
| Expressway | Local Connector |
| Secondary Hwy | Local Road |
| Ramp | 4WD |
| Interstate Route | US Route |
| | State Route |

| | | |
|---|---|---|
| 1 | 2 | 3 |
| 4 | 5 | |
| 6 | 7 | 8 |

ADJOINING QUADRANGLES

WALDRON, IN
2016

