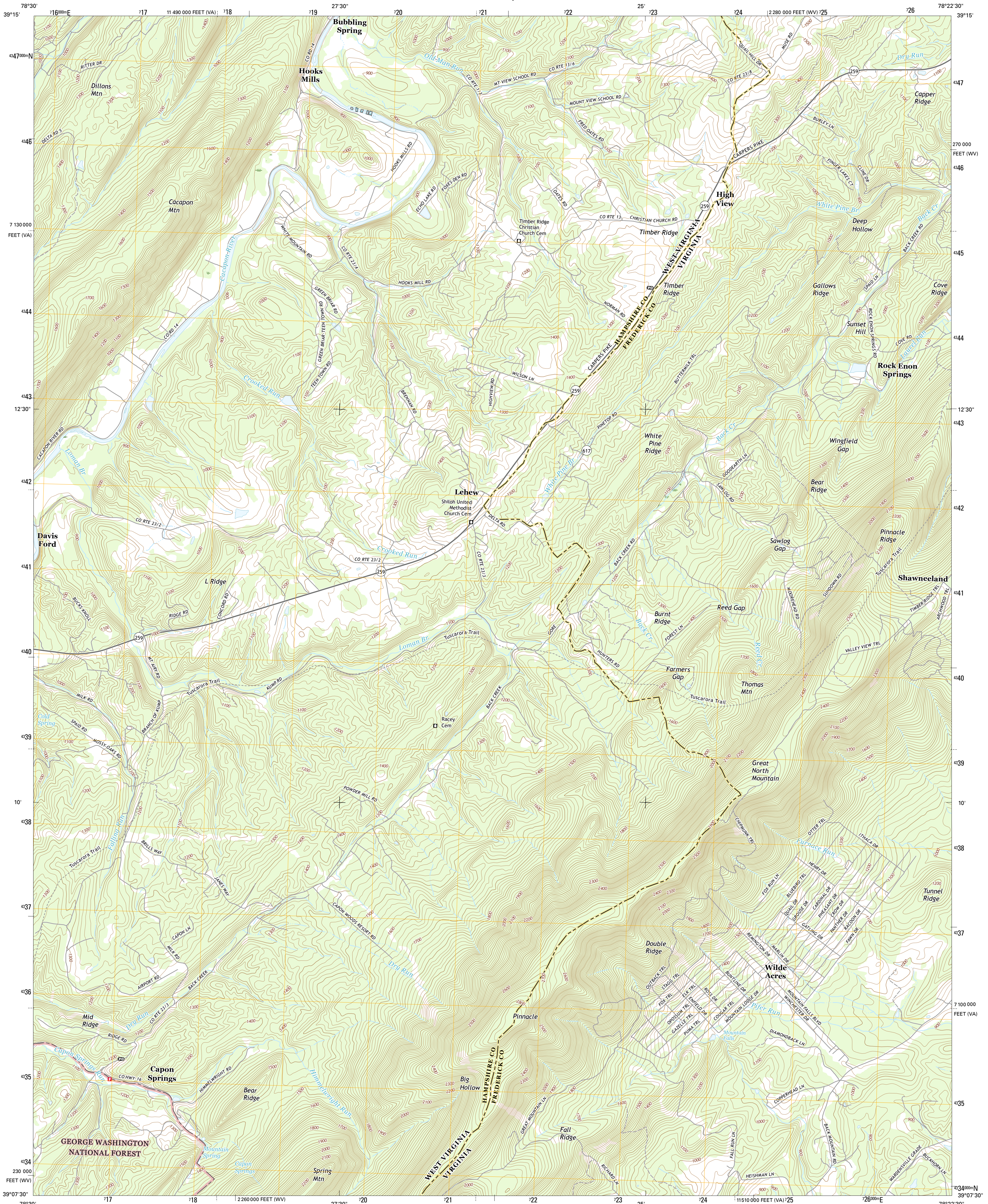




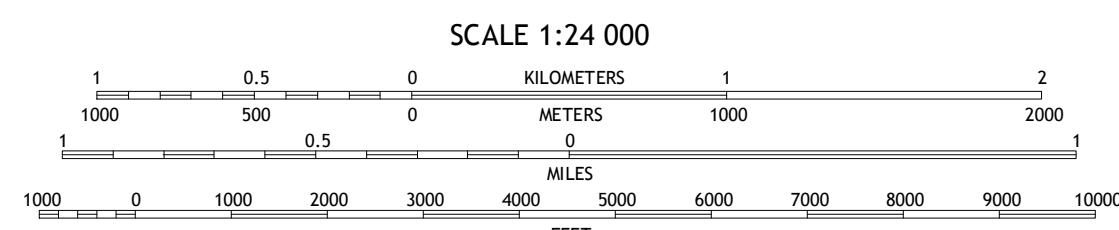
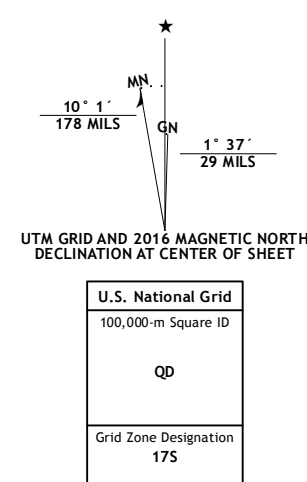
U.S. DEPARTMENT OF THE INTERIOR
U.S. GEOLOGICAL SURVEY



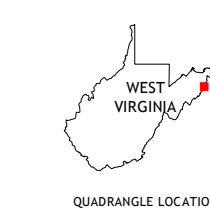
CAPON SPRINGS QUADRANGLE
WEST VIRGINIA-VIRGINIA
7.5-MINUTE SERIES



Produced by the United States Geological Survey
North American Datum of 1983 (NAD83)
World Geodetic System of 1984 (WGS84) Projection and
1 000-meter grid: Universal Transverse Mercator, Zone 17S
10 000-foot ticks: West Virginia Coordinate System of 1983
(north zone), Virginia Coordinate System of 1983 (north zone)
This map is not a legal document. Boundaries may be
generalized for this map scale. Private lands within government
reservations may not be shown. Obtain permission before
entering private lands.
Imagery.....NAIP, November 2014
Roads.....U.S. Census Bureau, 2015 - 2016
Roads within US Forest Service Lands.....FS Topo Data
with limited Forest Service updates, 2012 - 2016
Names.....National Hydrography Dataset, 2014
Hydrography.....National Elevation Dataset, 2005
Contours.....Multiple sources; see metadata file 1972 - 2016
Boundaries.....FWS National Wetlands Inventory 1977 - 2014
Wetlands.....FWS National Wetlands Inventory 1977 - 2014



CONTOUR INTERVAL 20 FEET
NORTH AMERICAN VERTICAL DATUM OF 1988
This map was produced to conform with the
National Geospatial Program US Topo Product Standard, 2011.
A metadata file associated with this product is draft version 0.6.19



1	2	3
4	5	6
7	8	9

ADJOINING QUADRANGLES

ROAD CLASSIFICATION	
Expressway	Local Connector
Secondary Hwy	Local Road
Ramp	4WD
Interstate Route	US Route
FS Primary Route	FS Passenger Route
	State Route
	FS High Clearance Route

Check with local Forest Service unit
for current travel conditions and restrictions.

CAPON SPRINGS, WV-VA
2016

