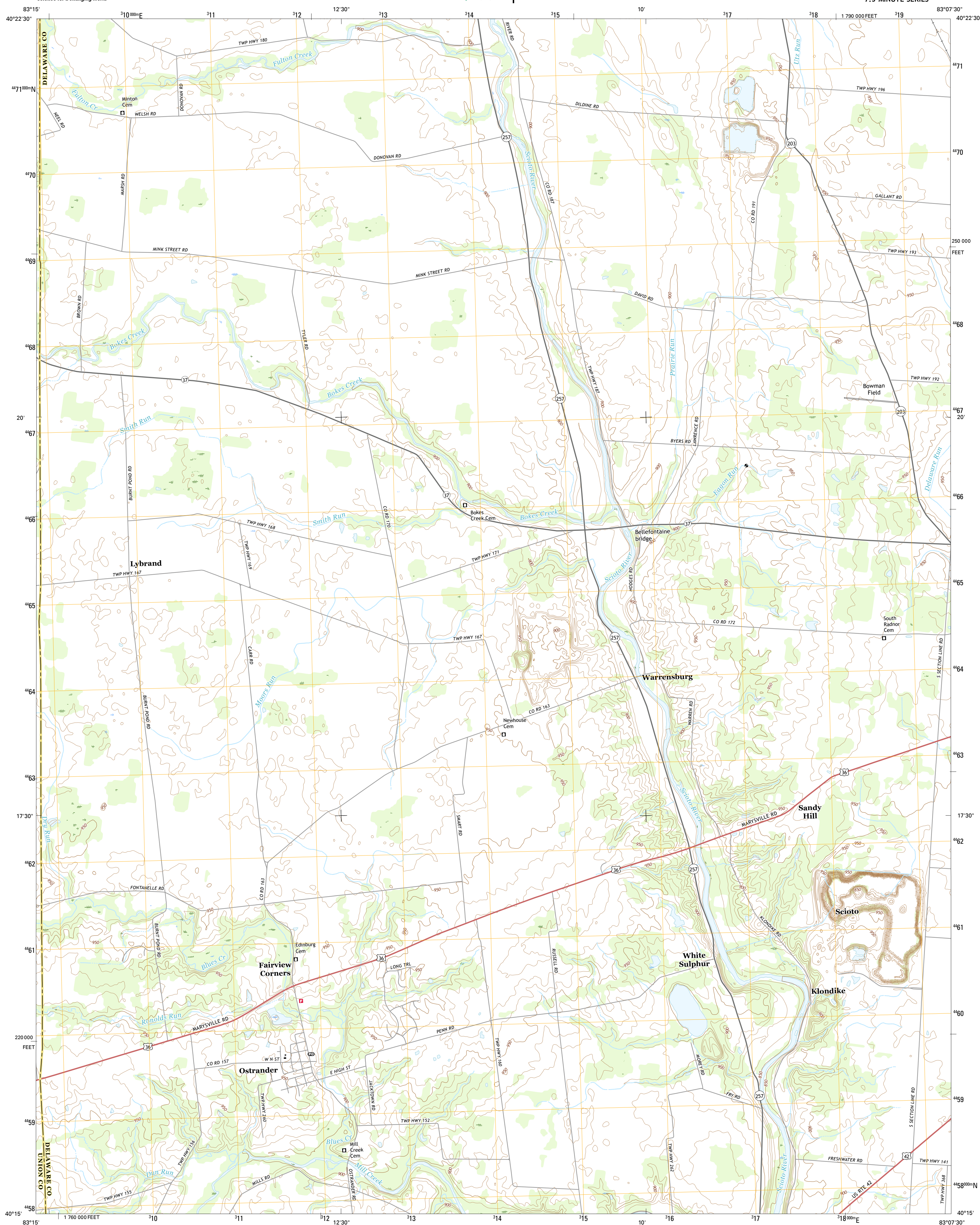




U.S. DEPARTMENT OF THE INTERIOR
U.S. GEOLOGICAL SURVEY



OSTRANDER QUADRANGLE
OHIO
7.5-MINUTE SERIES



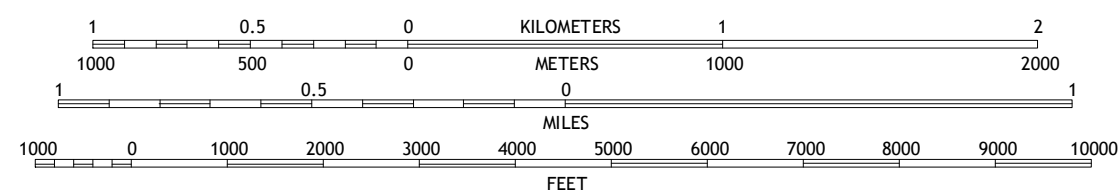
Produced by the United States Geological Survey
North American Datum of 1983 (NAD83)
World Geodetic System of 1984 (WGS84). Projection and
1 000-meter grid: Universal Transverse Mercator, Zone 17T
10 000-foot ticks: Ohio Coordinate System of 1983 (north zone)

This map is not a legal document. Boundaries may be generalized for this map scale. Private lands within government reservations may not be shown. Obtain permission before entering private lands.

Imagery.....N.A.I.P., October
Roads.....U.S. Census Bureau, 2015 -
Names.....GNIS,
Hydrography.....National Hydrography Dataset,
Contours.....National Elevation Dataset,
.....multiple sources; see metadata file 1972
Public Land Survey System.....BLM,
Wetlands.....FWS National Wetlands Inventory 1977 -

U.S. National Grid
100,000-m Square ID
LE
Grid Zone Designation
17T

SCALE 1:24 000



CONTOUR INTERVAL 10 FEET
NORTH AMERICAN VERTICAL DATUM OF 1988

This map was produced to conform with the
National Geospatial Program US Topo Product Standard, 2011.
The data file associated with this product is draft version 0.6.19



QUADRANGLE LOCATION

ROAD CLASSIFICATION



1	2	3
4		5
6	7	8

ADJOINING QUADRANGLES

- 1 Richwood
- 2 Prospect
- 3 Waldo
- 4 Magnetic Springs
- 5 Delaware
- 6 Marysville
- 7 Shawnee Hills
- 8 Powell

ADJOINING QUADRANGLES

OSTRANDER, OH
2016