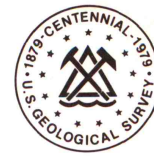
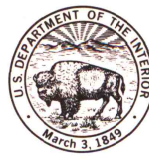


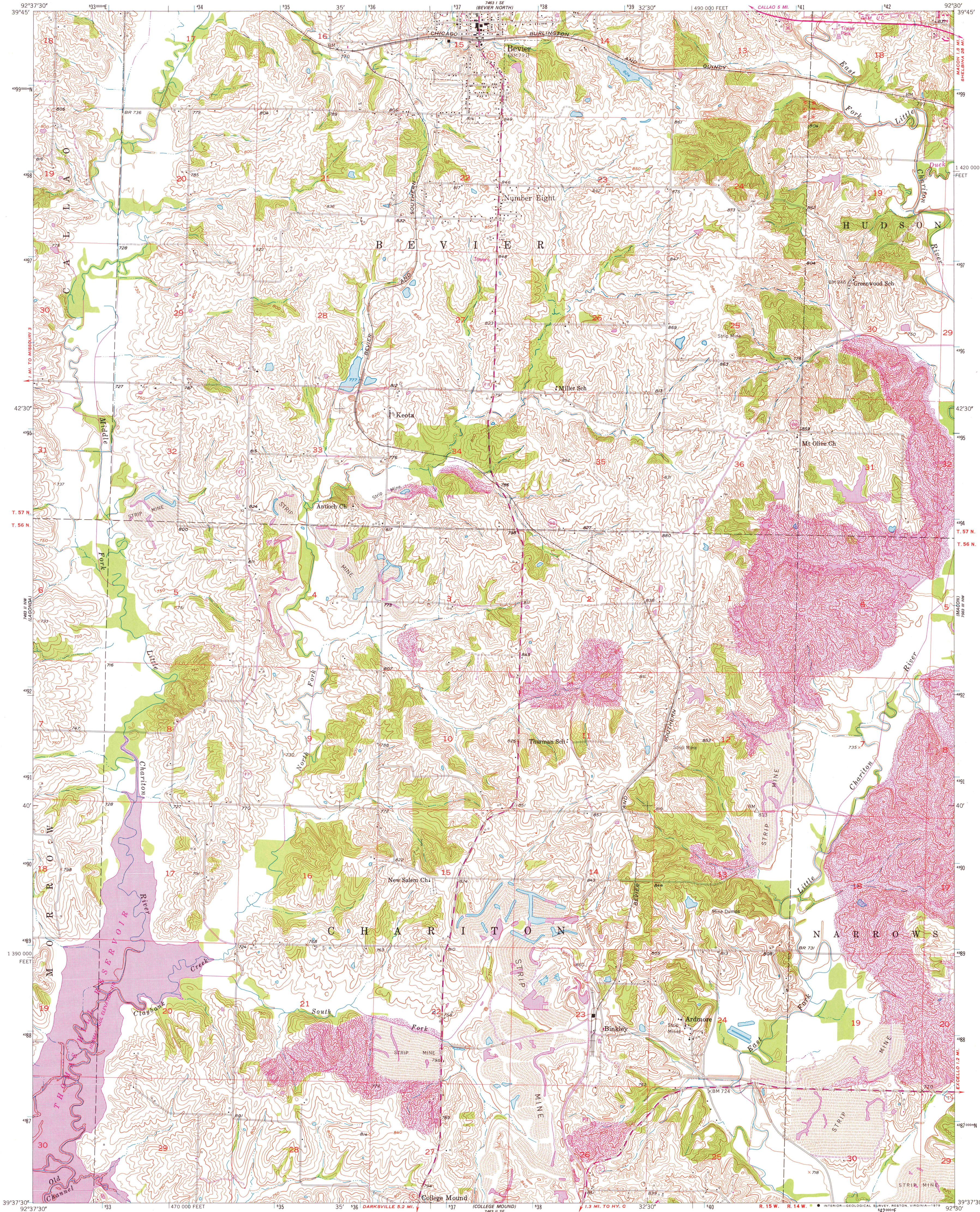
NEW CAMBRIA EAST

UNITED STATES
DEPARTMENT OF THE INTERIOR
GEOLOGICAL SURVEY

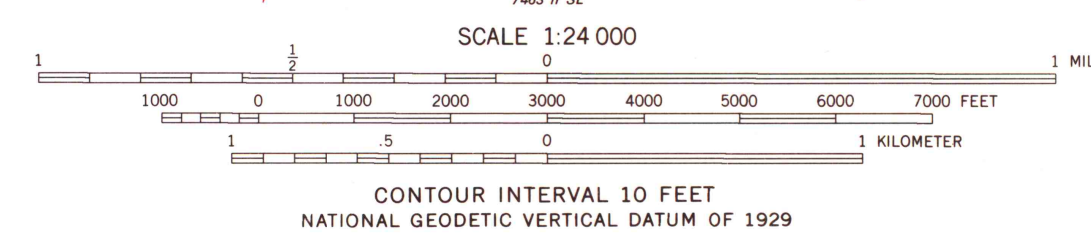
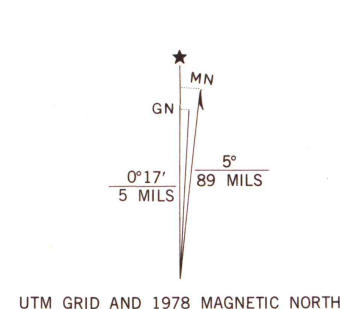


BEVIER SOUTH QUADRANGLE
MISSOURI-MACON CO.
7.5 MINUTE SERIES (TOPOGRAPHIC)

NEW CAMBRIA WEST



Mapped, edited, and published by the Geological Survey as part of the Department of the Interior program for the development of the Missouri River Basin Control by USGS and USC&GS
Topography from aerial photographs by multiplex methods
Aerial photographs taken 1949. Field check 1953
Polyconic projection. 1927 North American datum
10,000-foot grid based on Missouri coordinate system, central zone
1000-meter Universal Transverse Mercator grid ticks, zone 15, shown in blue
Revisions shown in purple compiled from aerial photographs taken 1977. Map edited 1978. This information not field checked



THIS MAP COMPLIES WITH NATIONAL MAP ACCURACY STANDARDS
FOR SALE BY U. S. GEOLOGICAL SURVEY, DENVER, COLORADO 80225, OR RESTON, VIRGINIA 22092
AND THE DIVISION OF RESEARCH AND TECHNICAL INFORMATION
MISSOURI DEPARTMENT OF NATURAL RESOURCES, ROLLA, MISSOURI 65401
A FOLDER DESCRIBING TOPOGRAPHIC MAPS AND SYMBOLS IS AVAILABLE ON REQUEST



ROAD CLASSIFICATION
Heavy-duty 4 LANE 16 LANE Light-duty
Medium-duty 4 LANE 16 LANE Unimproved dirt
U. S. Route State Route

BEVIER SOUTH, MO.
N3937.5-W9230/7.5

1953
PHOTOREVISED 1978
AMS 7463 II NE-SERIES V879

MAP AND AIR PHOTO
LIBRARY

JUN 26 1979

University of Wisconsin
Madison