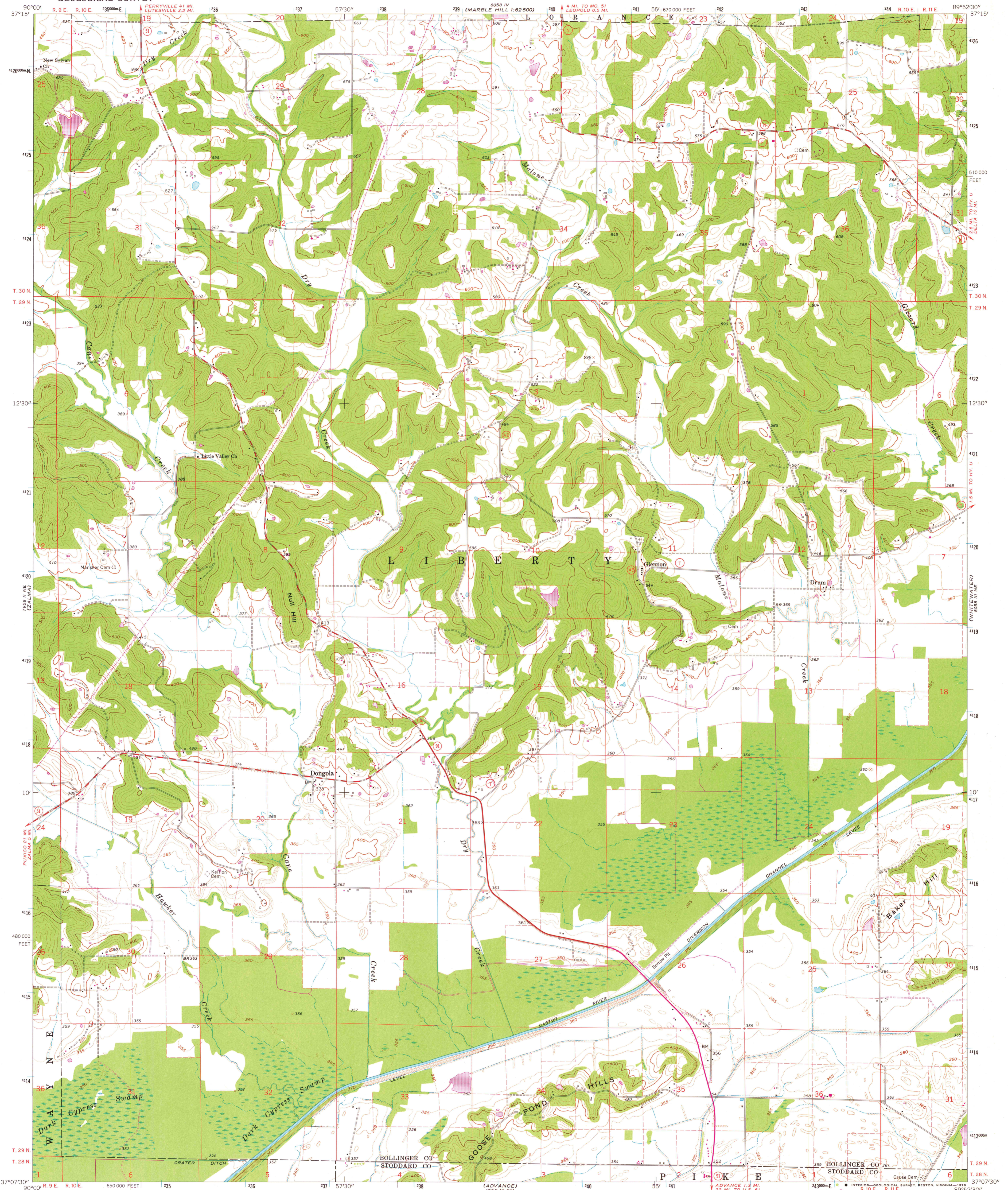


UNITED STATES  
DEPARTMENT OF THE INTERIOR  
GEOLOGICAL SURVEY

DONGOLA QUADRANGLE  
MISSOURI  
7.5 MINUTE SERIES (TOPOGRAPHIC)



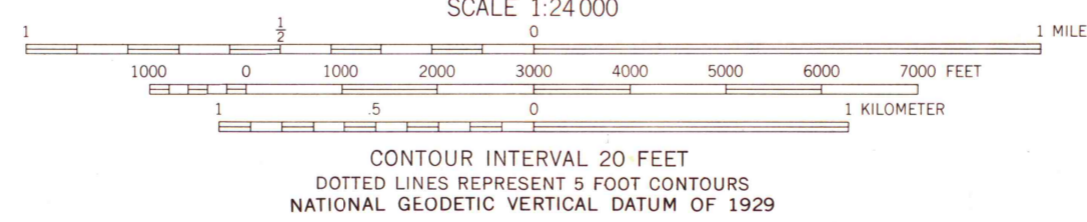
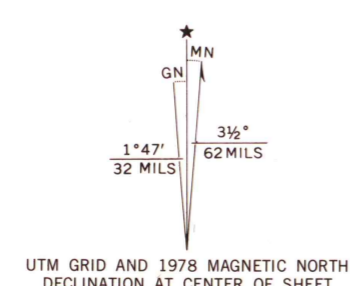
Mapped, edited, and published by the Geological Survey  
Control by USGS and USC&GS

Topography by photogrammetric methods from aerial  
photographs taken 1962 and planetable surveys 1963

Polyconic projection. 1927 North American datum  
100,000-foot grid based on Missouri coordinate system, east zone  
1000-meter Universal Transverse Mercator grid ticks,  
zone 16, shown in blue

Fine red dashed lines indicate selected fence and field lines where  
generally visible on aerial photographs. This information is unchecked

Revision shown in purple compiled from aerial photographs  
taken 1976 and other source data. This information not  
field checked. Map edited 1978



THIS MAP COMPLIES WITH NATIONAL MAP ACCURACY STANDARDS  
FOR SALE BY U.S. GEOLOGICAL SURVEY, DENVER, COLORADO 80225, OR RESTON, VIRGINIA 22092  
MISSOURI GEOLOGICAL SURVEY, ROLLA, MISSOURI 65401.  
A FOLDER DESCRIBING TOPOGRAPHIC MAPS AND SYMBOLS IS AVAILABLE ON REQUEST



MAP AND AIR PHOTO  
LIBRARY

MAR 03 1979

University of Wisconsin  
Madison

DONGOLA, MO.

N3707.5—W8952.5/7.5

1963  
PHOTOREVISED 1978  
AMS 8058 III NW—SERIES V879