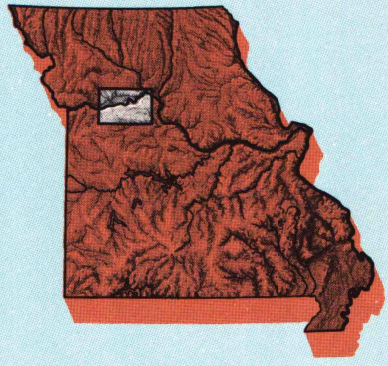


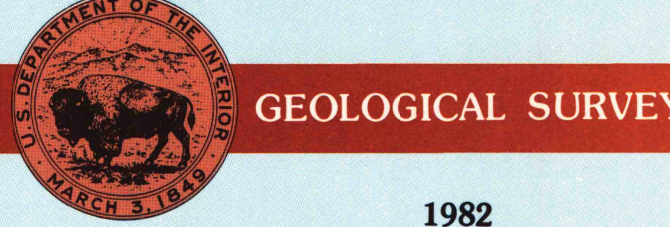
Marshall MISSOURI

1:100 000-scale metric
topographic map



30 X 60 MINUTE QUADRANGLE
SHOWING

- Contours and elevations in meters
- Highways, roads and other manmade structures
- Water features
- Woodland areas
- Geographic names



Produced by the United States Geological Survey
Compiled from USGS 1:24 000-scale topographic maps dated 1949-1979. Planimetry revised from aerial photographs taken 1978 and 1980 and other source data. Revised information not field checked. Map edited 1982.
Projection and 10 000-meter grid, zone 15, Universal Transverse Mercator.
25 000-foot grid ticks based on Missouri coordinate system, central and west zones.
1927 North American Datum.
To place on the predicted North American Datum 1983 move the projection lines 2 meters north and 17 meters east.
There may be private inholdings within the boundaries of the National or State reservations shown on this map.

CONTOUR INTERVAL 10 METERS
SUPPLEMENTARY CONTOUR INTERVAL 5 METERS
NATIONAL GEODESIC VERTICAL DATUM OF 1929
ELEVATIONS SHOWN TO THE NEAREST METER

THIS MAP COMPLIES WITH NATIONAL MAP ACCURACY STANDARDS

CONVERSION TABLE

Meters	Feet
1	3.2808
2	6.5617
3	9.8425
4	13.1234
5	16.4042
6	19.6850
7	22.9659
8	26.2467
9	29.5276
10	32.8084

To convert meters to feet multiply by 3.2808

To convert feet to meters multiply by 0.3048

DECLINATION DIAGRAM

UTM grid convergence (GCM) and 1982 magnetic declination (MD) at center of map. Diagram is approximate.

ADJOINING MAPS

1	2	3
4	5	
6	7	8

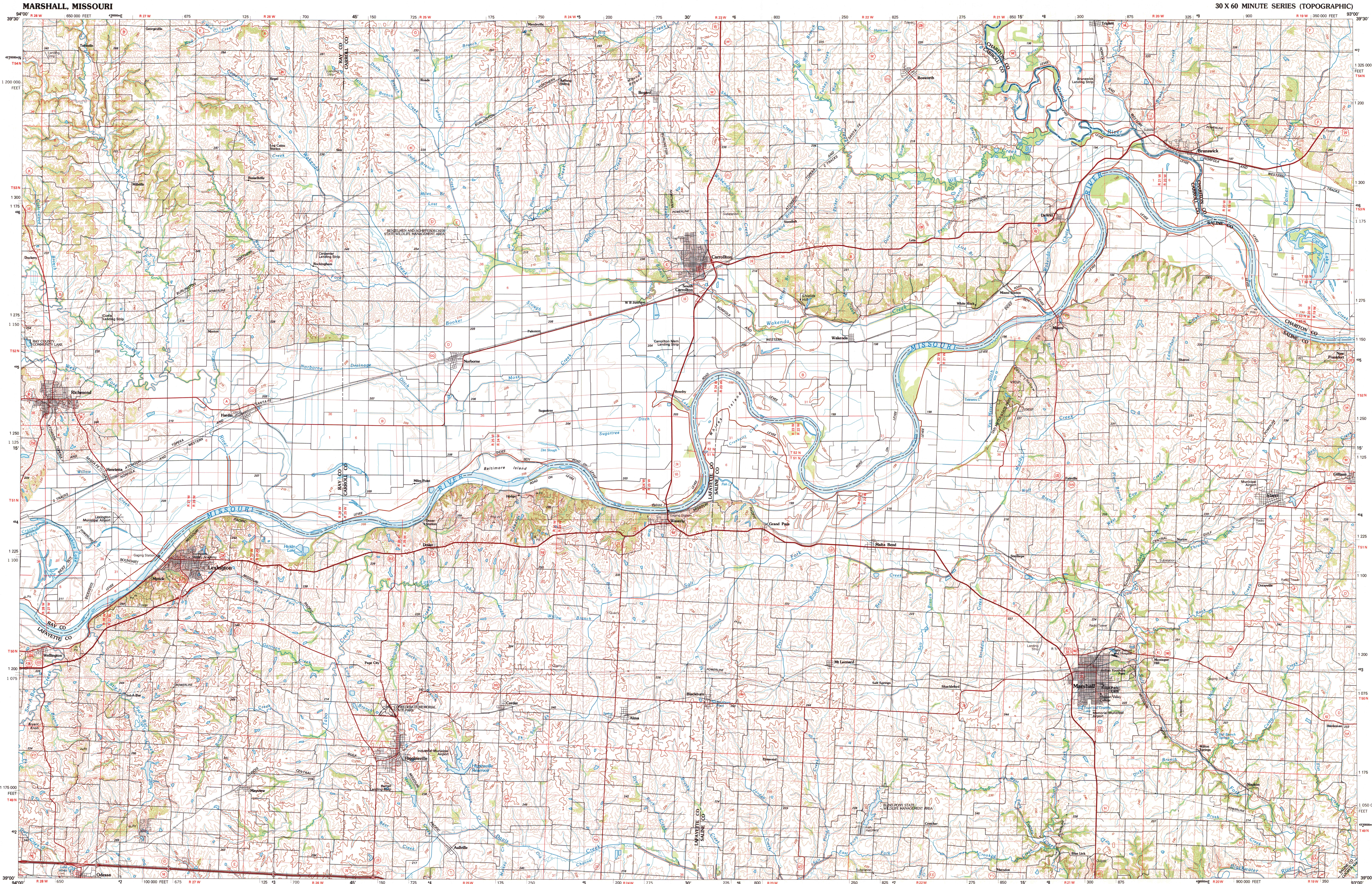
- 1 Chillicothe
- 2 Macon
- 3 Kansas City
- 4 Kansas City
- 5 Olathe
- 6 Olathe
- 7 Sedalia
- 8 Jefferson City

FOR SALE BY U. S. GEOLOGICAL SURVEY, DENVER, COLORADO 80225
OR RESTON, VIRGINIA 22092

Topographic Map Symbols

Primary highway, hard surface	
Secondary highway, hard surface	
Light duty road, principal street, hard or improved surface	
Other road or street, trail	
Route marker: Interstate, U.S. State	
Bridge: overpass, underpass	
Tunnel: road, railroad	
Built up area: healthy, elevation	
Airport: landing field, landing strip	
National boundary	
State boundary	
County boundary	
National or State reservation boundary	
Land grant boundary	
U.S. public lands survey: range, township, section	
Range, township, section line: protracted	
Power transmission line: pipeline	
Dam; dam with lock	
Cemetery: building	
Windmill; water well; spring	
Mine shaft; adit or cave; mine, quarry; gravel pit	
Campground; picnic area, U.S. location monument	
Ruins; cliff dwelling	
Disturbed surface: strip mine, levee, sand	
Contours: index, intermediate, supplementary	
Bathymetric contours: index, intermediate	
Stream, lake: perennial; intermittent	
Rapids, large and small; falls, large and small	
Area to be submerged; marsh, swamp	
Land subject to controlled inundation; woodland	
Shrub; mangrove	
Orchard; vineyard	

A pamphlet describing topographic maps is available on request



MARSHALL, MISSOURI
39093-A1-TM-100

1982

ARTHUR H. ROBINSON MAP LIBRARY
University of Wisconsin-Madison

SET

2006-96