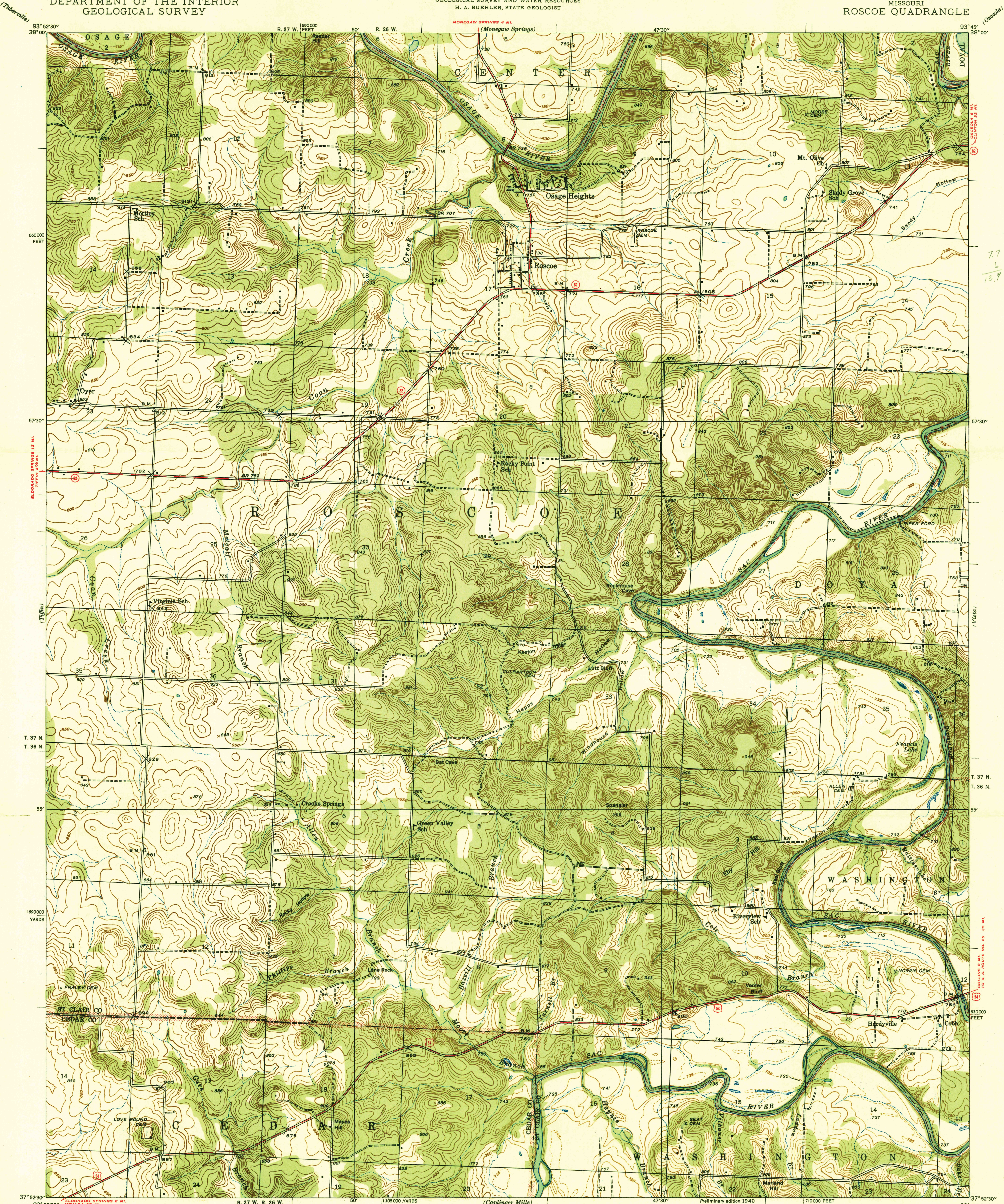


U. S. G. S.
FILE COPY
Inspection and Editing.

UNITED STATES
DEPARTMENT OF THE INTERIOR
GEOLOGICAL SURVEY

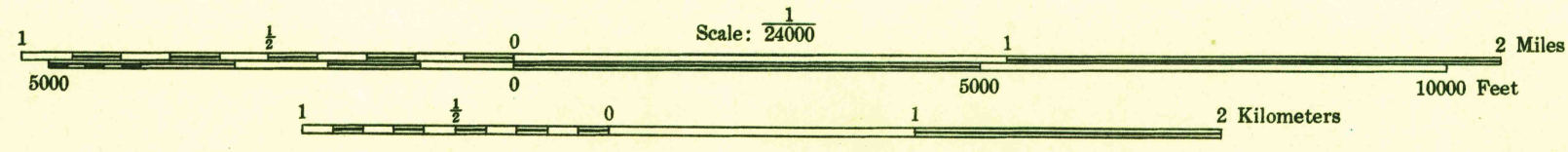
STATE OF MISSOURI
GEOLOGICAL SURVEY AND WATER RESOURCES
H. A. BUEHLER, STATE GEOLOGIST

MISSOURI
ROScoe QUADRANGLE

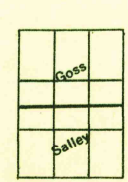


Glenn S. Smith, Division Engineer
Topography by C. L. Salley and C. E. Goss
Surveyed in 1938

TRUE NORTH
MAGNETIC NORTH
APPROXIMATE MEAN
DECLINATION, 1988



Contour interval 10 feet
5 foot contours added in dashed lines
Datum is mean sea level



USGS
Historical File
Topographic Division
Polyconic projection, 1927 North American datum
5000 yard grid based on U. S. zone system, D
100000 foot grid based on Missouri (West)
rectangular coordinate system

ROScoe, MO.
N 3752.5-W 9345.7/7.5

U. S. G. S.
FILE COPY
Inspection and Editing.

APR 26 1940