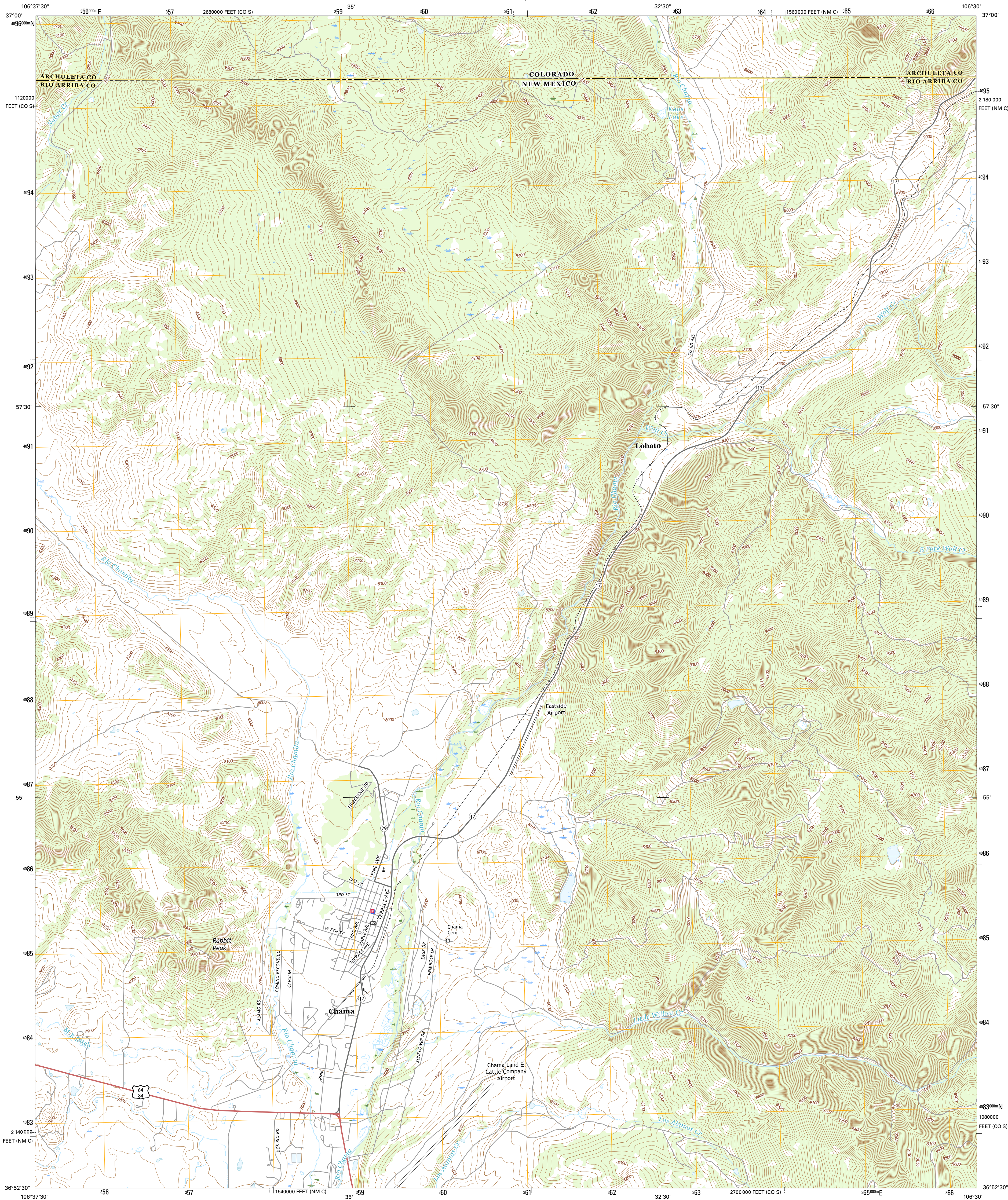




U.S. DEPARTMENT OF THE INTERIOR
U.S. GEOLOGICAL SURVEY



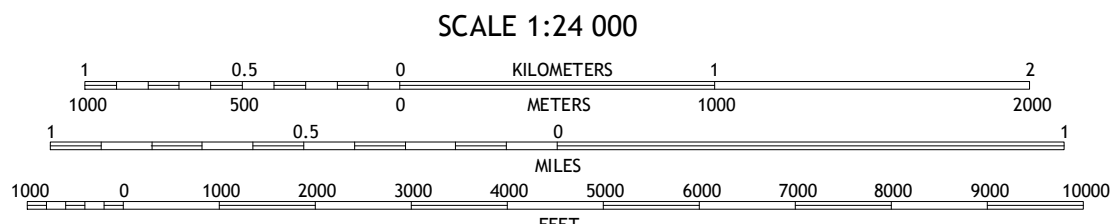
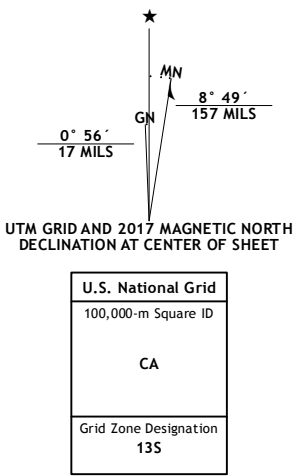
CHAMA QUADRANGLE
NEW MEXICO-COLORADO
7.5-MINUTE SERIES



Produced by the United States Geological Survey
North American Datum of 1983 (NAD83)
World Geodetic System of 1984 (WGS84). Projection and
1 000-meter grid: Universal Transverse Mercator, Zone 13S
10 000-foot ticks: New Mexico Coordinate System of 1983
(central zone), Colorado Coordinate System of 1983 (south zone)

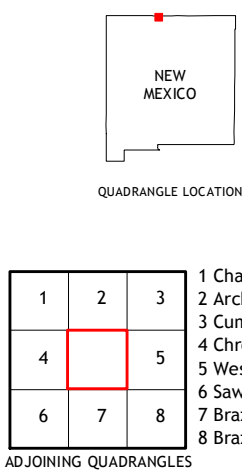
This map is not a legal document. Boundaries may be
generalized for this map scale. Private lands within government
reservations may not be shown. Obtain permission before
entering private lands.

Imagery.....NAIP, November 2015
Roads.....U.S. Census Bureau, 2015
Names.....GNIS, 2016
Hydrography.....National Hydrography Dataset, 2015
Contours.....National Elevation Dataset, 2000
Boundaries.....Multiple sources; see metadata file 1972-2016
Public Land Survey System.....BLM, 2016
Wetlands.....FWS National Wetlands Inventory 1977-2014



CONTOUR INTERVAL 20 FEET
NORTH AMERICAN VERTICAL DATUM OF 1988

This map was produced to conform with the
National Geospatial Program US Topo Product Standard, 2011.
A metadata file associated with this product is draft version 0.6.19



ROAD CLASSIFICATION

Expressway
Secondary Hwy
Ramp
Interstate Route
US Route
State Route

Local Connector
Local Road
4WD
US Route
State Route

1	2	3
4	5	6
7	8	9

ADJOINING QUADRANGLES

1 Chama Peak
2 Archuleta Creek
3 Cumbe
4 Chromo Mountain
5 West Fork Rio Brazos
6 Sawmill Mesa
7 Brazos
8 Brazos Peak

CHAMA, NM-CO
2017

